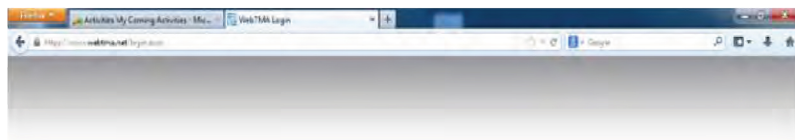


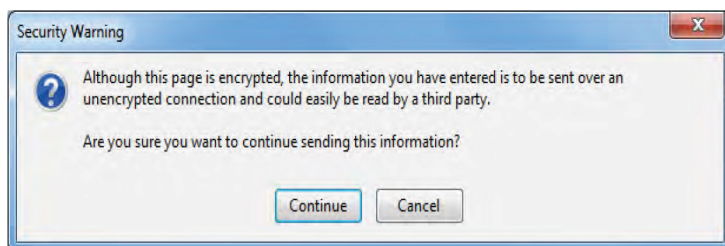
Go to:
webtma.net

The image shows the WebTMA login interface. At the top left is the 'WebTMA' logo with the tagline 'powered by tma systems'. At the top right is the URL 'www.tmasystems.com'. The main content area has a dark background. On the left, there is a white login box containing a 'Language:' dropdown menu set to 'English', and input fields for 'Login ID:', 'Password:', and 'Client:'. Below these fields are 'Login' and 'Reset' buttons, and a 'Remember Me' checkbox. A link for 'I forgot my password' is at the bottom of the box. On the right, there is a white box for 'TMA Technical Support:' with contact information: 'Phone: 016.839.6400', 'Phone (Toll Free) : 800.228.8765', 'Email: support@tmasystems.com', and 'Web Support: http://tmasystems.net'. At the very bottom, there are links for 'Privacy Policy' and 'Terms of Use'.

Enter the Login ID: **crete\firstname.lastname (your user name)**

Password: **(Your Doane password)**

Client: **doane university**



Click the Continue button. A window should pop up. If you do not see the window, make sure that you have allowed pop ups for this site. The window you should see is below: